

FS50 HANDHELD SCARIFIER



Technical Data	
Parts manual	136.1044
Product manual	PM .06/07
Design File	DF .11

Customs Tariff Codes		
	Product	Spares
Power tools	846789000	846799000
Assembled machines	846790000	846790000
Consumables		

Nationwide Engineering & Tools Ltd

Unit 6, Etone Business Park,
Whitacre Road
Nuneaton,
Warwickshire,
United Kingdom.
CV11 6BP

Tel: 0044(0)24 7634 1878
Fax: 0044(0)24 7637 4349
Email: sales@ne-at.co.uk

Dealer

Nationwide Engineering & Tools Ltd

Unit 6 Etone Business Park,
Whitacre Road,
Nuneaton,
Warwickshire,
United Kingdom.
CV11 6BP

Tel: 0044(0)24 7634 1878
Fax: 0044(0)24 7637 4349
Email: sales@ne-at.co.uk

Dealer

FS50 Pneumatic Scarifier



WARRANTY

We warrant that the product is free from defects in materials and workmanship. If such a fault is found within six months from date of purchase from an approved dealer, the company will replace free of charge all failed components. Any failed unit must be returned carriage paid to the factory for inspection. The warranty does not cover failure attributable to wear and tear, accidental damage, site or operator misuse or lack of maintenance. We will not accept units under warranty that third parties have attempted to repair or disassembled

FS50 SCARIFIER PARTS MANUAL

FS50 SCARIFIER PARTS MANUAL

INDEX

Page	Contents
3	Warranty
4	Index
5	Build Detail
6	Safety Instructions
7	FS50 Pneumatic Technical Specification
8	FS50 Flexible Drive and Electric Specification
9	FS50 Pneumatic –Putting into Service
10	FS50 Pneumatic Maintenance
11	FS50 Pneumatic Air Tool Illustration
12	FS50 Pneumatic Air Tool Parts List
13	Dewalt 849 Sander Illustration
14	Dewalt 849 Sander Parts List
15	Hitachi SP18V Sander Illustration
16	Hitachi SP18V Parts List
17	FS50 Guard Assembly Parts Breakdown
18	FS50 Flexible Drive Parts Breakdown
19	Drive/ Handpiece Illustration
20	FS50 Parts Illustration
21	FS50 Cutter Drum, TC Drum and Wire Brush Parts Breakdown and Illustrations
22	Service Engineers Notes
23	Modification Record
24	

FS50 SCARIFIER PARTS MANUAL

FS50 SCARIFIER PARTS MANUAL

BUILD DETAIL

Model	
Machine Serial Number	
Motor/Engine Manufacturer	
Motor/Engine Serial Number	
Machine Built by	
Tested by	
Build Date	

DEALER PREDELIVERY INSPECTION

Tested	
Date	

EC DECLARATION OF CONFORMITY (STATIC MACHINES)

We Declare under our sole responsibility that the product(s)
FS50 HANDHELD AND PNEUMATIC SCARIFIERS
to which this certificate relates is in conformity with the following directives

Supply of Machinery (Safety Regulations) 1992 (SI 1992/3073)
Supply of Machinery (Safety) (Amendment) 1994 (SI 1994/2063)
Safety of Machinery BS EN292-1&2 1991, BS EN 294 1991, BS EN 294 1993,
BS EN 418 1992, BS EN 457 1992, BS EN 563 1993, BS EN 614 1965
BS EN 1033 1996, BS5378 1980
89/392/EEC Machines Directive
93/44/EEC & 93/68/EEC Amendment to Machines Directive

This equipment must not be put into service until the machinery into
which it is to be incorporated has been declared in conformity with
the provisions of the above mentioned directive.

Certified by

Raghubir Chand
Director

Date

Friday, June 07, 2024

FS50 SCARIFIER PARTS MANUAL

FS50 FLEXIBLE DRIVE

Part Number	Description	Weight
505.1020	Guard Assembly	1.22 kg
143.1030.8	Handpiece	0.95 kg
147.1000.1500	1.5 mtr 9 x 25 Drive c/w Hexagon Coupling	5.00 kg
147.1004.1500	1.5 mtr 9 x 25 Drive c/w Claw Coupling	6.33 kg
147.1000.3000	3.0 mtr 9 x 25 Drive c/w Hexagon Coupling	6.25 kg
1471004.3000	3.0 mtr 9 x 25 Drive c/w Claw Coupling	7.55 kg
147.1000.6000	6.0 mtr 9 x25 mtr Drive c/w Hexagon Coupling	8.70 kg
147.1004.6000	6.0 mtr 9 x 25 mtr Drive c/w Claw Coupling	10.0 kg
	Drums as FS50 Pneumatic	
	Drive Power Units Refer to Poker Manual	

Technical Specification to suit Hitachi SP18V and Dewalt DW849 51mm Collar

Model	Hitachi SP18V	Hitachi SP18V	Dewalt DW849	Dewalt DW849	Qty	Weight
Output Spindle Thread	5/8 UNC	14 mm	5/8 UNC	14 mm	-	-
FS50 c/w Guard and Sander	500.3011	500.3013	500.3010	500.3012	1	3.20 kg
Guard Assembly	505.1044.1	505.1044.1	505.1044.1	505.1044.1	1	1.22 kg
Cage c/w TCT Cutters	504.4001.10.1	504.4003.10.1	504.4001.10.1	504.4003.10.1	24	1.82 kg
Cage c/w Star Cutters	504.4001.10.2	504.4003.10.2	504.4001.10.2	504.4003.10.2	28	1.37 kg
Drum c/w Flail Shafts	504.4001.10	504.4003.10	504.4001.10	504.4003.10	1	0.91 kg
TC Grinding Drum Assy	504.5000	504.5001	504.5000	504.5001	1	1.75 kg
Steel Wire Brush Assembly	504.3120	504.3123	504.3123	504.3120	2	1.30 kg

FS50 SCARIFIER PARTS MANUAL

FS50 DRUMS PARTS LIST AND ILLUSTRATIONS



Drum c/w Wire Brush

Item	Description	Qty	Part No
400a	Drum c/w Brushes 5/8	1	504.3120
400b	Drum c/w Brushes 14 mm	1	504.3123
402	Steel Wire Brush	2	920.1060.30
403	Spindle & Sideplate	1	504.2063.11
404	Sideplate	1	504.2063.30

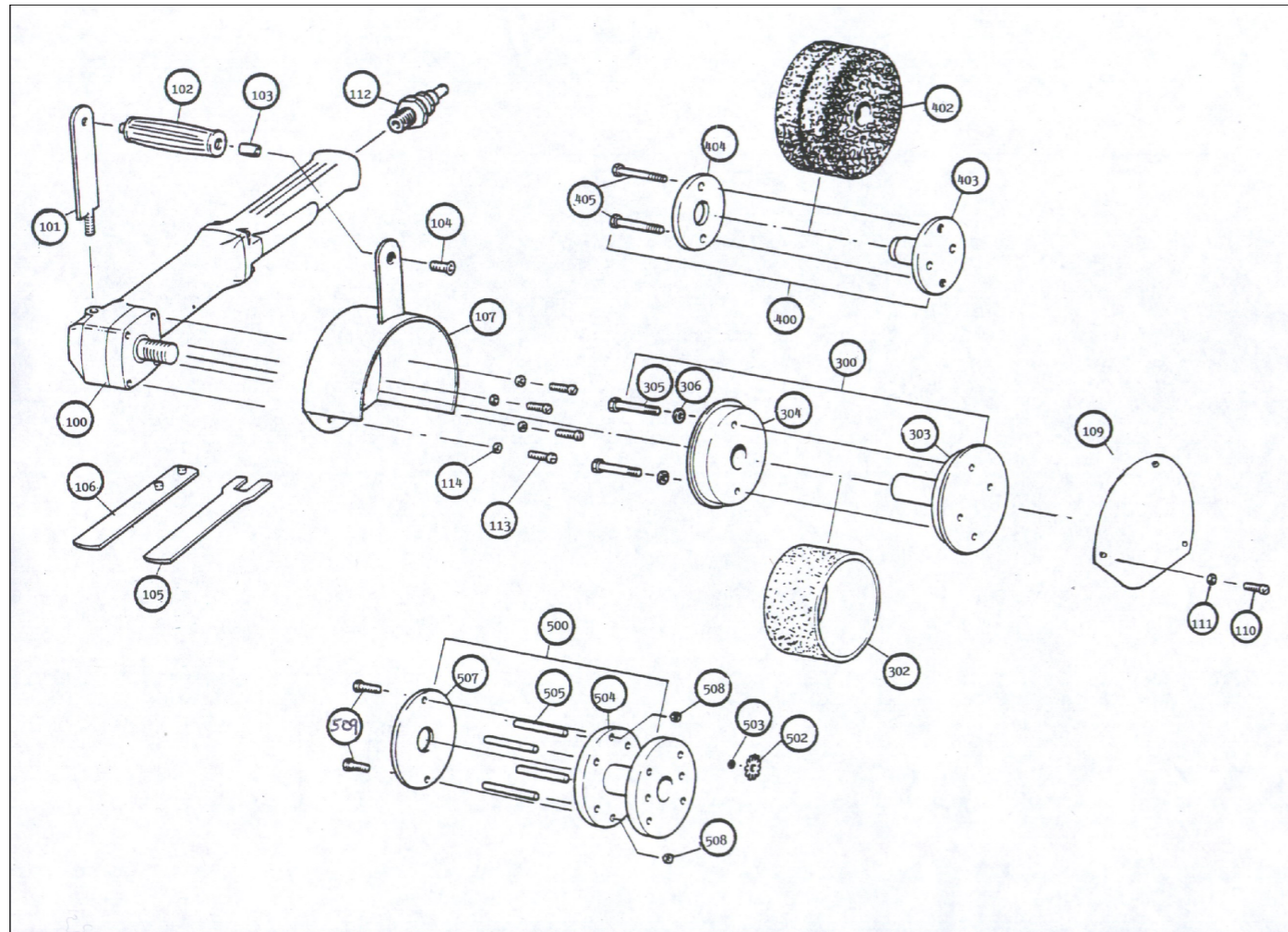
Drum c/w Flail Shafts

Item	Description	Qty	Bare Drum	Qty	Drum c/w TCT Cutters	Qty	Drum c/w Steel Cutters
500a	Drum c/w Flail Shafts 5/8 UNC	1	504.4001.10	1	504.4001.10.1	1	504.4001.10.2
500b	Drum c/w Flail Shafts 14 mm	1	504.4003.10	1	504.4003.10.1	1	504.4003.10.2
501	Cutters	0	-	20	521.1000	28	520.1002
502	Washers	0	-	28	506.1000.9	32	506.1000.9
504	Drum	1	504.2020.1	1	504.2020.1	1	504.2020.1
505	Flail Shafts	4	507.1001.4	4	507.1001.4	4	507.1001.4
507	Cover Plate	1	504.2163	1	504.2163	1	504.2163
508	Nylon Insert Nut M6	2	990.1001.6	2	990.1001.6	2	990.1001.6
509	Socket Countersunk Screw M6 x 25	2	982.1007.25	2	982.1007.25	2	982.1007.25

Drum c/w TC Drum

Item	Description	Qty	Part Number
300a	Drum c/w TC Drum 5/8 UNC	1	504.5000
300b	Drum c/w TC Drum 14 mm	1	504.5001
302	Drum	1	504.1010.1
303	Spindle & Sideplate	1	504.2043.1
304	Sideplate	1	504.2042
305	Socket Head Cap Screw	2	984.1008.60
306	Spring Washer	2	991.1020.8

FS50 SCARIFIER ILLUSTRATION



FS50 Pneumatic Putting into Service

Air Supply

Use a clean lubricated air supply that will give a measured air pressure at the tool of 90 p.s.i./6.3 bar when the tool is running with the trigger/lever depressed. Use the recommended hose size and length. It is recommended that the tool is connected to the air supply as shown in figure 1. Do not connect the tool to the air line system without incorporating an easy to reach and operate air shut off valve. The air supply should be lubricated. It is strongly recommended that an air filter, regulator, lubricator (FRL) is used as shown in figure 1 as this will supply clean, lubricated air at the correct pressure to the tool. Details of such equipment can be obtained from your supplier/dealer. If such equipment is not used the tool should be lubricated by shutting off the air supply to the tool and de-pressurising the line by pressing the trigger on the tool. Disconnect the air line and pour into the intake bushing a teaspoonful (5ml) of a suitable pneumatic motor lubricating oil preferably incorporating a rust inhibitor. Reconnect tool to an air supply and run tool slowly for a few seconds to allow air to circulate the oil. If tool is used frequently lubricate on a daily basis and also if tool starts to lose power. It is recommended that the air pressure at the tool whilst tool is running is 90 p.s.i./6.3bar. The tool can be run at lower and higher pressures with the maximum permitted working air pressure of 100 p.s.i./7bar. The tool incorporates an air regulator to reduce the speed of the tool if required..

WORK STATIONS

The tool should only be used as a hand operated tool. It is recommended that the tool is used when standing on a solid floor. It can be used in other positions but before any such use the operator must be in a secure position having a firm grip and footing and be aware of safety rules to be obeyed when using the sander/polisher.

WARNING

When using this tool the following must be worn

SAFETY GLASSES
SAFETY GLOVES
BREATHING MASK

If you don't have them do not use the machine

Always read the FS50 and Air Tool Manual
 If you haven't read them **do not** use the machine

FS50 Pneumatic Maintenance

Dismantling

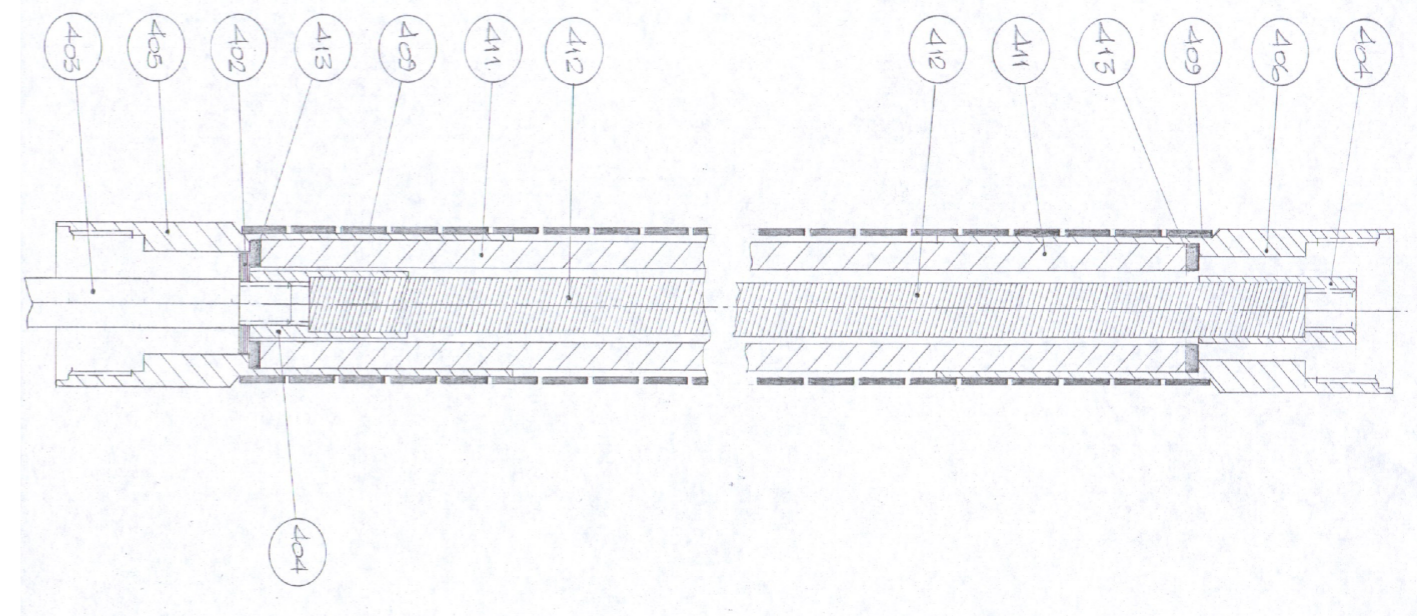
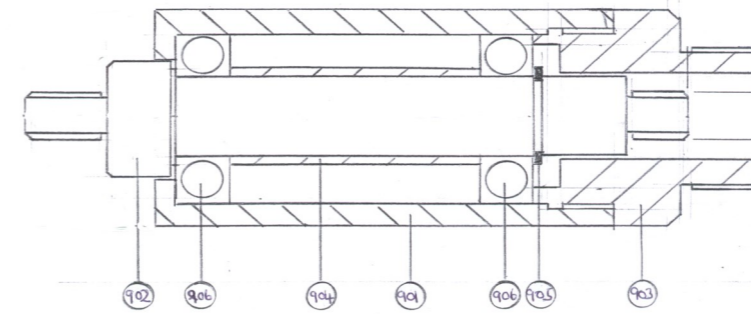
Grip Spindle (21) with the spanner provided and grip the drum and unscrew. Remove side handle (28). Grip motor housing case (1) on the flats at the rear end and unscrew lock ring (23) with a suitable peg spanner and pull out spindle (21) together with key (22), bearing (18), gear (25) and bearing (26). Support bearing (18) and tap spindle through assembly to release key (22), bearing (18), bearing (26) and gear (25). Drive out pin (3) to release locking lever (2). Do not dismantle locking lever. Unscrew inlet bushing (50) together with screen (44). With a sharp pointed tool, lever out retainer ring (42). Take out exhaust sleeve (41) and remove O Ring (24) from exhaust sleeve (41). With a wide bladed screwdriver, unscrew valve nut (10) and remove O Ring (9), O Ring (7) Air regulator (8), Spring (6), Throttle valve (4) and O Ring (5). Unscrew cap (29) to release the remaining angle housing assembly. Remove coupling (36) and roll pin (49). Roll pin (49) may be driven out of coupling (36). Unscrew cap lock (30) together with O Ring (48). Grip locknut (35) and pull out the motor assembly from the housing case (1). To dismantle motor assembly, grip motor assembly and tap rear end of the rotor (15) through rear end plate (12) and bearing (11) assembly. Make a note at this time of the orientation of end plates (12) and (19) to cylinder (14). Remove cylinder (14), two off roll pins (13) and four off rotor blades (16) from rotor (15).b In a vice with soft jaws grip rotor (15). and unscrew locknut (35). Rotor (15) may then be tapped through bearing (20), shim (45), collar (17) and front end plate case (19). Roll pin (47) may be removed from front end case (19) and bearing (20) tapped out of front case (19) and bearing (11) tapped out of rear end plate (12). Grip housing (27) in a vice with soft jaws and with stiff rod passed through the holes in pinion bearing nut and remove spacer (33) and pinion assembly. Unscrew nut (35) from pinion (31) and remove bearing (32) and spacer (34).

Re-assembly

Clean and examine all parts for wear and replace only with genuine parts. Ensure that the faces of the motor end plates that abut the cylinder are flat and free from burrs. Lap on a flat very fine grade of abrasive paper if necessary. Check O rings for cuts and wear. Lightly coat all parts with oil, pack bearings and pinion and gear with lithium or molybdenum based general purpose grease and reassemble in reverse order.

Note :- when assembling motor assembly into the main case ensure that the pin in the side of the front end case locates in the groove in the front end case. Pour 5 ml of a suitable pneumatic lubricating oil incorporating a rust inhibitor, into the air inlet and connect to a suitable supply.

HANDPIECE AND DRIVE ILLUSTRATION



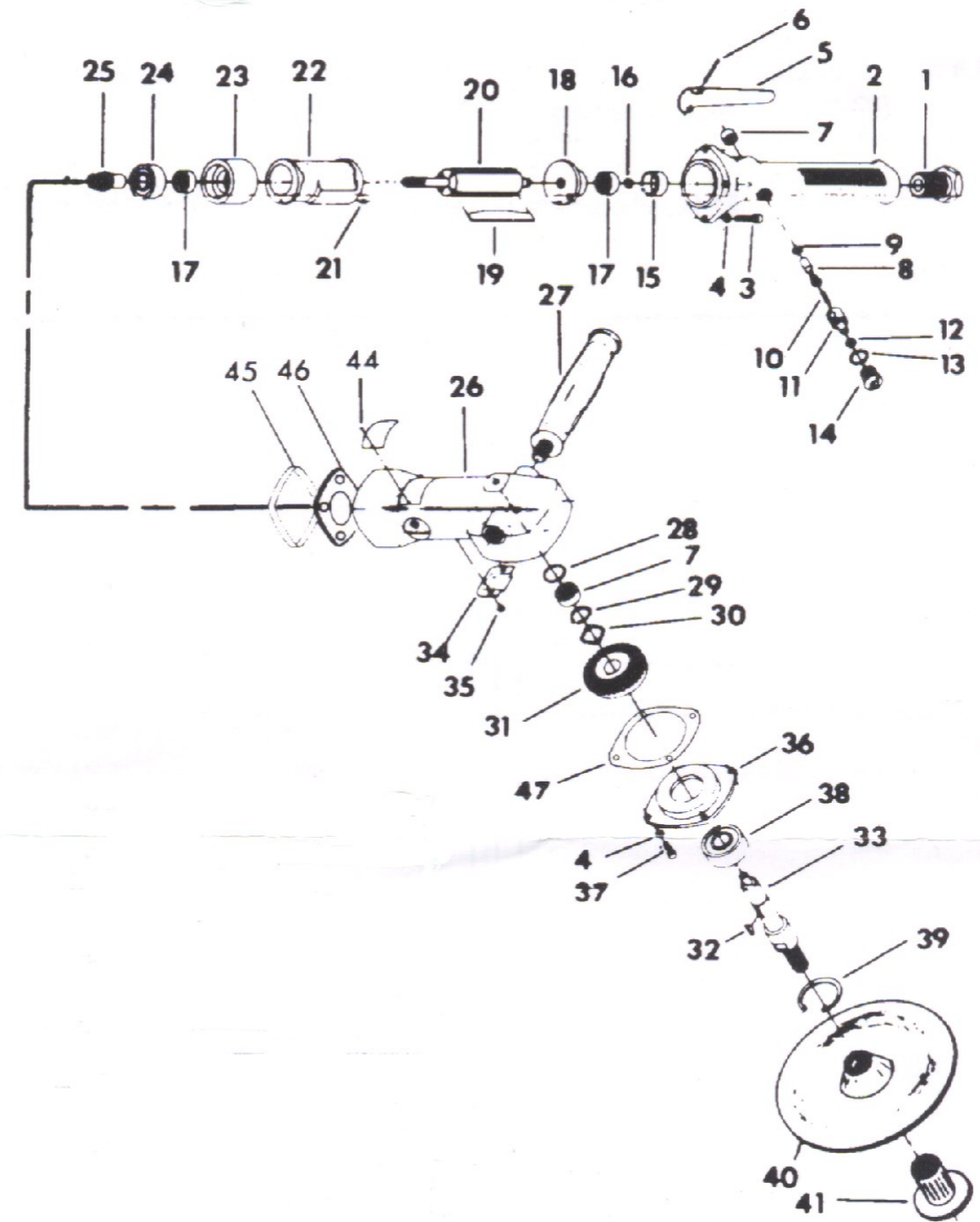
FS50 SCARIFIER PARTS MANUAL

Drives c/w TH2 Handpiece 1/2 BSW

Item	Description	Qty	1.5 Mtr Drive	3.0 Mtr Drive	6.0 Mtr Drive
400	Drive c/w Handpiece	1	147.1000.1500	147.1000.3000	147.1000.6000
400a	Drive c/w Ends	1	114.1059.1500	114.1059.3000	114.1059.6000
402	Retaining Washer	1	109.1031.2	109.1031.2	109.1031.2
403	Hexagon Tag	1	124.1011.1	124.1011.1	124.1011.1
404	Shaft Connection	2	126.1000.1	126.1000.1	126.1000.1
405	Cover Adaptor Handpiece End	1	115.1059.02	115.1059.02	115.1059.02
406	Cover Adaptor Motor End	1	115.1059.02	115.1059.02	115.1059.02
408	Nitrile O Ring	1	978.1003.40	978.1003.40	978.1003.40
409	Cover Spring	2	120.1000.25	120.1000.25	120.1000.25
410	Grease	1	902.1002.1	902.1002.1	902.1002.1
411	Cover c/w Cover Adaptor	1	117.1040.1500	117.1040.3000	117.1040.6000
411a	Cover w/o Cover Adaptors	1	117.2016.1455	117.2016.1455	117.2016.1455
412	Shaft c/w Shaft Connection	1	127.1009.1545	127.1009.1545	127.1009.1545
412	Shaft w/o Shaft Connections	1	127.2009.1505	127.2009.1505	127.2009.1505
500	Hexagon Adaptor	1	116.1010.02	116.1010.02	116.1010.02
500a	Claw Coupling	1	119.1018.02	119.1018.02	119.1018.02
900	Handpiece TH2 1/2 BSW	1	143.1030.8	143.1030.8	143.1030.8
901	Body	1	143.1031	143.1031	143.1031
902	Spindle	1	143.1032.3	143.1032.3	143.1032.3
903	End Cap	1	143.1033	143.1033	143.1033
904	Bearing Spacer	2	143.1034	143.1034	143.1034
905	Standard External Circlip 1400-0017	1	977.1010.17	977.1010.17	977.1010.17
906	Deep Groove Ball Bearing 6003-2RS	2	979.1000.10	979.1000.10	979.1000.10

FS50 SCARIFIER PARTS MANUAL

AIR TOOL ILLUSTRATION



FS50 SCARIFIER PARTS MANUAL

PNEUMATIC TOOL PARTS BREAKDOWN

Item	Description	Qty	Part Number
	Universal UT8752	1	970.2001.1
	Compare BW1008		970.2001.1
	Florida		979.2001.1
1	Hose Adaptor	1	AP729084
2	Handle	1	AP730086
3	Cap Screw	2	AP1012474
4	Lockwasher	8	AP729035
5	Lever	1	AP729264
6	Lever Pin	1	AP729167
7	Throttle Bushing	1	AP729261
8	Valve Stem	1	AP729259
9	O Ring	1	AP1012370
10	Valve Spring	1	AP729258
11	Air Regulator	1	AP729282
12	O Ring	1	AP729088
13	O Ring	1	AP729073
14	Valve Stem	1	AP729262
15	Bearing Cap	1	AP729250
16	Retaining Ring	1	AP729225
17	Ball Bearing	1	AP729188
18	Rear End Plate	1	AP729231
19	Rotor Blade	4	AP729230
20	Rotor Sander	1	AP729268
21	Pin	1	AP729252
22	Cylinder	1	AP729229
23	Front End Plate		AP730087
24	Ball Bearing		AP1005478
25	Pinion Gear		AP730089
26	Motor Housing		AP730090
27	Dead Handle		AP729284
28	Bearing Plate		AP730091

Item	Description	Qty	Part Number
29	Retaining Ring	1	AP730092
30	Wave Washer	1	AP730093
31	Bevel Gear Sander	1	AP730094
32	Key	1	AP729272
33	Work Spindle	1	AP730095
34	Exhaust Deflector	1	AP730096
35	Screw	2	AP730097
36	Housing Cap	1	AP730098
37	Cap Screw	4	AP729989
38	Ball Bearing	1	AP1005471
39	Retaining Ring	1	AP730100
40	7 Dia Pad	1	AP731247
41	Nut	1	AP731075
42	O Ring	1	AP900670
43	Open End Wrench	1	AP1010911
44	Name Plate Screw	4	AP729343
45	Housing Band	1	AP900003
46	Motor Gasket	1	AP732450
47	Gasket	1	AP900004

WARNING

When using this tool the following must be worn

SAFETY GLASSES
SAFETY GLOVES
BREATHING MASK

If you don't have them do not use the machine

Always read the FS50 and Air Tool Manual
If you haven't read them **do not** use the machine

FS50 SCARIFIER PARTS MANUAL

FS50 GUARD ASSEMBLY

Item	Description	Qty	Pneumatic	Flexible Drive	Electric 51 mm	Electric 41 mm
	FS50 c/w Guard	1	500.3001	-	-	-
	FS50 Hitachi c/w Guard	1	-	-	500.3013	500.3013
	FS50 Dewalt c/w Guard	1	-	-	500.3012	500.3012
	FS50 Guard Assembly	1	505.1015.1	505.1020	505.1045.1	505.1045.3
100	Sander	1	970.2001.1	-	-	-
101	Handle Extension	1	505.1016.10	-	-	-
102	Handle	1	505.1016	-	-	-
103	Handle Insert	1	505.1016.20	-	-	-
104	Hex Head Set Screw	1	998.1008.25	-	-	-
104a	Spring Washer	1	991.1020.8	-	-	-
105	Spanner	1	970.2001.2	-	-	-
106	Drum Tool	1	517.1000.2	517.1000.2	517.1000.2	517.1000.2
107	Guard	1	505.1015.10	505.1020	505.1044.1	505.1044.3
108	Plastic Cover <small>Moss ref SR1510-11143</small>	1	904.1000.1	904.1000.1	904.1000.1	904.1000.1
109	Side plate	1	505.1013.1	505.1013.1	505.1013.1	505.1013.1
110	Socket Button Head Screw	3	984.1007.6	984.1007.6	984.1007.6	984.1007.6
111	Spring Washer	3	991.1002.6	991.1002.6	991.1002.6	991.1002.6
112	Locknut M14	1	990.1020.14	-		
113	Socket Head Cap Screw M8 x 45	1	-	-	984.1008.45	984.1008.45
114	Serial No Label	1	137.1014.1	137.1014.1	137.1014.1	137.1014.1
115	CE Label	1	137.1047	137.1047	137.1047	137.1047

FS50 Pneumatic Scarifier



5024

FS50 SCARIFIER PARTS MANUAL

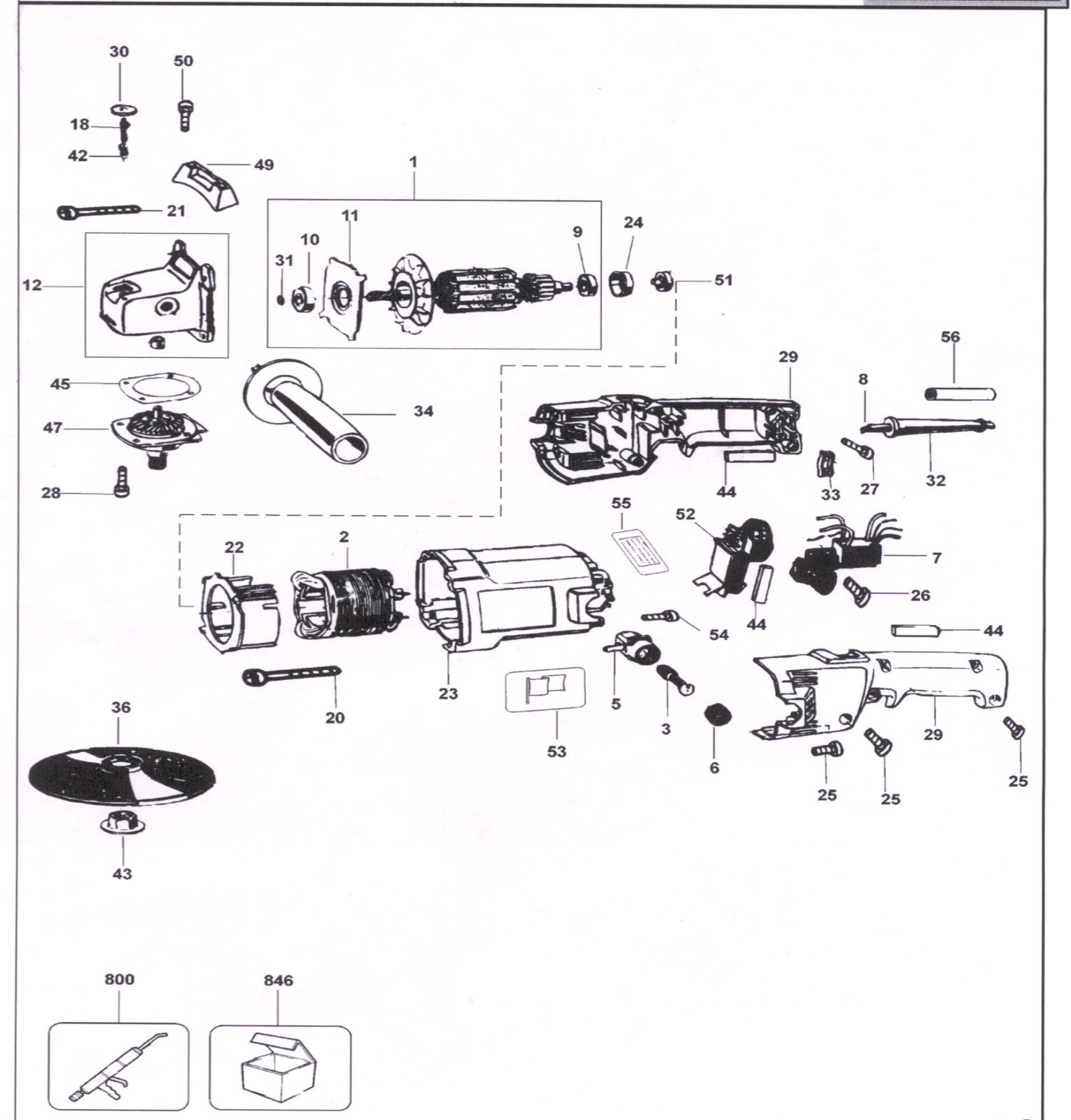
SP18V Parts List			
Item	Part No	Description	Qty
1a	996-070	Gear Cover Assy Including 14-21,23	1
2	982-032	Tapping Screw (W/SP Washer) D5 x 25	4
3	620-1T1	Bearing 6201T12VVC3PS2S	1
4	953-265	Distance Piece	1
5	990-864	Felt Packing (A)	1
6	953-236	Bearing Cover	1
7	987-203	Seal Lock Screw (W/SP Washer) M4 x 12	6
8A	360-064C 360-064D 360-064E 360-064F	Armature 110v-115v Armature 120v-127v Armature 220v-230v Armature 240v	1 1 1 1
9	986-171	Fan Guide	1
10	956-669	Tapping Screws D5 x 55	2
11	981-010	Internal Wire	1
11	990-861	Internal Wire For SUI	1
12	340-12C 340-102D 340-102E 340-102F 340-102G	Stator Assembly 110v-115v incl 13 Stator Assembly 120v-127v incl 13 Stator Assembly 220v-230v incl 13 Stator Assembly 240v incl 13 Stator Assembly 240v incl 13 for Aus	1 1 1 1 1
13	930-703	Brush Terminal	2
14	948-011	Retaining Ring for D16 Hole	1
15	938-595	Dust Seal	1
16	938-394	Lock Pin	1
17	938-597	Spring	1
18	938-596	Ring	1
19	938-498	Bushing	1
20	938-599	Felt Packing (C)	1
21	937-033	Felt Washer	1
22	981-205	Side Handle for M10	1
23	600-0VV	Ball Bearing 6000VVCMP2S	1
24A	938-395	Sleeve	1
25	996-071	Gear	1
26	937-077	Bearing Cover	1
27	620-2VV	Ball Bearing 6202VVCMP2S	1
28	938-403	Felt Packing	1
29	940-533	Feather Key 3 x 3 x 10	2
30	996-080	Spindle M14	1
30A	996-081	Spindle 5/8 x 11UNC USA and Canada1	1
31	986-179	Seal Packing (B)	1
32A	996-072	Packing Gland	1
33	993-985	Seal Locking Screw (W/SP Washer) M5 x 16	1
34	953-247A	Rubber Pad (D14 Hole)	1
34	953-255	Rubber Pad (D16 Hole) USA and Canada	1
35	953-246Z 953-254	Washer Nut M14 Washer Nut 5/8 11 UNC for USA and Canada	1 1
36	956-387	Dust Seal (A)	1
37	996-078 996-078	Housing Assy Inc 42,49 Housing Assy incl 42,49 for Aut	1 1
38		Setting Seat	1
39A	986-914	Mark Plate	1
40		Name Plate	

SP18V Parts List			
Item	Part No	Description	Qty
41	949-509	Rivet D2.5 x 3.2 (10 PCs)	2
42	985-114	Hex Socket Set Screw M4 x 6	2
43	608-VVM	Ball bearing 608VVMC2ESPS2L	1
44	931-701	Bearing Lock	1
45	986-172	Dust Seal	1
46	996-082	Rotor (B)	1
47	945-161 961-781	Brush Cap Brush Cap	2 2
48	999-043	Carbon Brush (1 Pair)	2
49	958-900 981-586	Brush Holder Brush Holder for Aut	2 2
50	957-561	Hitachi label	1
51	996-075 996-076 996-077 996-084	Controller 110v-115v Controller 120v-127v Controller 220v-240v Controller 220v	1 1 1 1
52	930-804	Terminal M4.0 (10 Pcs)	1
53	959-140	Connector 50091 (10 Pcs)	1
54	981-373	Tube D For Cord	2
55	986-181	Handle (A)	1
56	984-750	Tapping Screw (W/Flange) D4 x 16	6
57	981-373	Tube (D)	1
58	959-141	Connector 50092 (10 Pcs)	1
59	954-017	Tapping Screw D4 x 12)	1
60	956-632 931-573 953-178	Switch (B) (2P Screw Type) W/lock 110v-127V Switch ("P Pillar Type) W/lock Switch (2P Pillar Type) W/Safety Lock	1 1 1
61	960-266	Cord Clip	1
62	958-049 940-778	Cord Armor D8.2 Cord Armor D10.7	1 1
63	500-201Z 500-234Z 500-237Z 500-240Z 500-247Z 500-248Z 500-439Z	Cord (Cord Armor D10.7) Cord (Cord Armor D8.2) For INA, SUR,ITA,FRG Cord (Cord Armor D8.2) for GBR (110V) Cord (Cord Armor D8.2) for USA,Can Cord (Cord Armor D10.7) for Swe,Nor Cord (Cord Armor D10.7) for Sui Cord (Cord Armor D10.7) for Aus, Ngu	1 1 1 1 1 1 1
63a	500-423Z 500-435Z 500-447Z	Cord (Cord Armor D10.7) for Sin, Kuw Cord (Cord Armor D8.2) for GBR 240v Cord (Cord Armor B8.2) For Syr	1 1 1
64	985-605	Tapping Screw (W/Washer) D5 x 25	4
65	996-073	Handle (B)	1
66	982-095	Tapping Screw (W/washer) D4 x 20	3
67	939-542	Retaining Ring for D12 shaft (10 Pcs)	1

FS50 SCARIFIER PARTS MANUAL

DEWALT 849 ELECTRIC SANDER ILLUSTRATION

SANDER/POLISHER DW849-----A TYPE



E13082.tif

FS50 SCARIFIER PARTS MANUAL

DEWALT DW849 ELECTRIC SANDER PARTS LIST

SANDER/POLISHER DW849-----A TYPE



Item	Qty	Part	Description	Price	Variants
1*	1	448519-08	ARMATURE & FAN		GB
1*	1	448519-06	ARMATURE & FAN		LX
2	1	155467-00	FIELD		GB
2	1	448171-75	FIELD		LX
3	2	450374-00	BRUSH		
5	2	448083-01	BRUSHBOX SA		
6	2	448084-01	BRUSH CAP		
7	1	450892-05	SWITCH		
8	1	330060-78	CORD		GB
8	1	562226-07	CABLE		LX
9*	1	330003-04	BEARING		
10*	1	330003-09	BEARING		
11	1	448079-00	PLATE		
12*	1	448506-07	GEARCASE		
18	1	447827-00	PIN		
20	2	330044-23	SCREW		
21	4	330019-15	SCREW		
22	1	447786-00	BAFFLE FAN		
23*	1	447799-08	FIELDCASE		
24	1	445217-02	SLEEVE		
25	8	330019-13	SCREW		
26	1	330019-01	SCREW.TEMP		
27	2	330019-03	SCREW		
28	1	158472-00	SCREW		
29	1	151122-12	HANDLE COVER		
30	1	448127-01	WASHER		
31	1	696060-00	RETAINER		
32	1	330005-01	CORD PROTECTOR		GB
32	1	401088-00	PROTECTOR		LX
33	1	142519-00	CABLE CLAMP		
34	1	86319-19	SIDE HANDLE		
36	1	51817-00	PAD		
42	1	448136-00	SPRING		
43	1	150088-00	WASHER CLAMP		
44	3	150844-00	PAD		
45	1	143106-00	GASKET		
47	1	449706-09	SPINDLE & GEAR		
49	1	148622-00	BUMPER		
50	2	133895-00	SCREW		
51	1	148210-01	MAGNET		
52	1	138122-22	MODULE		GB
54	1	330019-02	SCREW		
55	1	387680-01	LABEL		
56	1	150855-00	TUBE		
800	1	429698-00	GREASE		
846	1	384480-00	BONNET POLISHING		

FS50 SCARIFIER PARTS MANUAL



LIST NO. 0337

ELECTRIC TOOL PARTS LIST

DISC SANDERS
Model SP 18V

1994 • 4 • 4
(E7)

